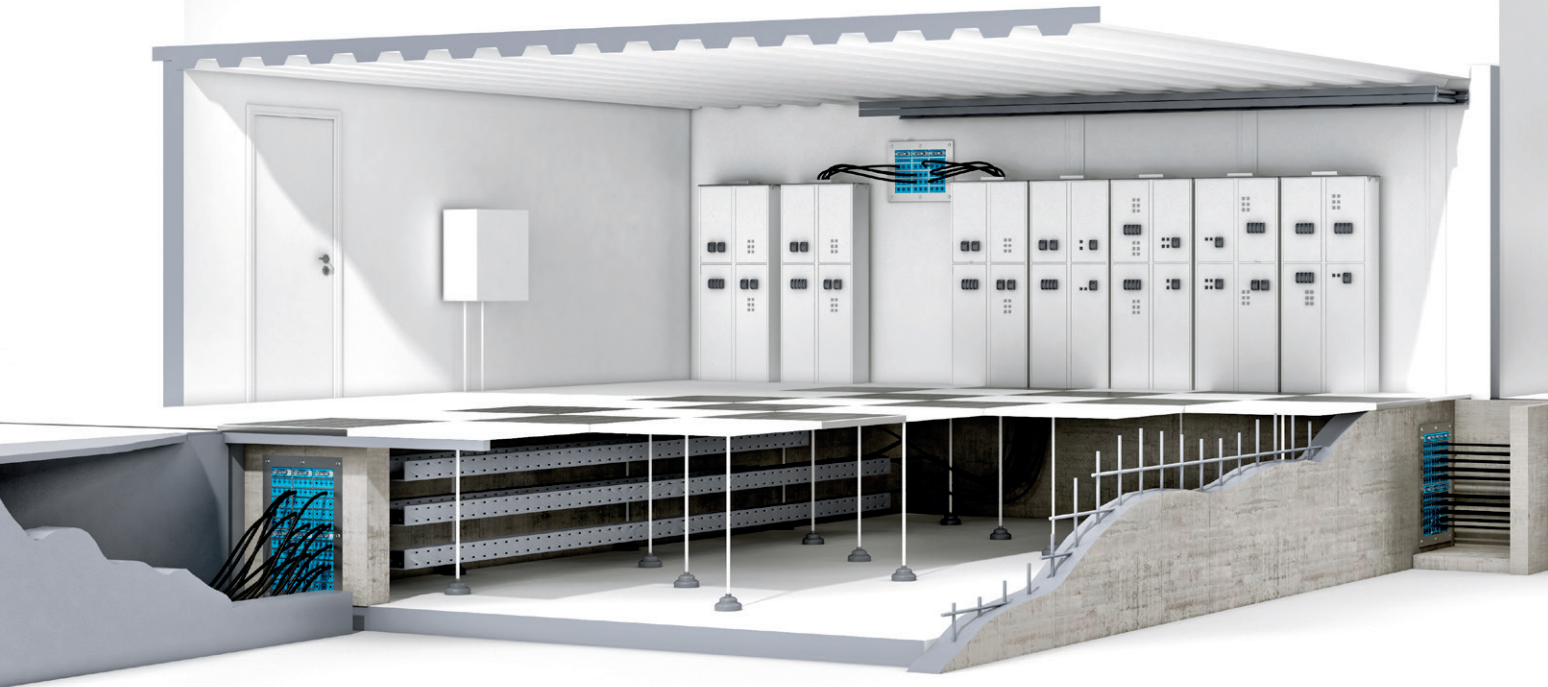


Applications for Roxtec seals within HVDC power transmission



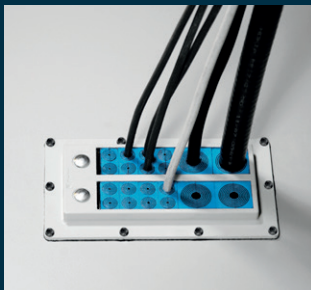
Roxtec sealing solutions for the HVDC transmission industry

Explore the multitude of applications where you can benefit from our solutions.



Cabinets & enclosures

Roxtec area efficient seals are ideal for entries to transformer cabinets, enclosures, junction boxes and other cabinet applications with high cable density. Protect your equipment with our smart cable entries that are openable to simplify maintenance and sudden changes.



Control cabinets



Power distribution



SCADA



Why use Roxtec?

- Watertight
- Firestop
- Gas-tight
- Dust-tight
- Pest and rodent barrier
- Cable retention

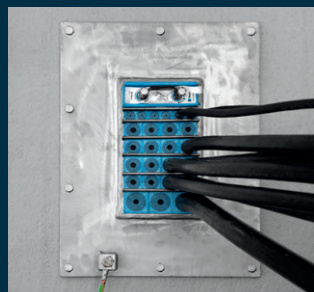
Superior simplicity

- One cut-out for dozens of pre-terminated cables
- Flexibility for cables and pipes of different sizes
- Built-in spare capacity for upgrades and retrofits
- EMC solutions for bonding, grounding and electrical safety
- Installation in wet conditions and running water
- Solutions for underground applications

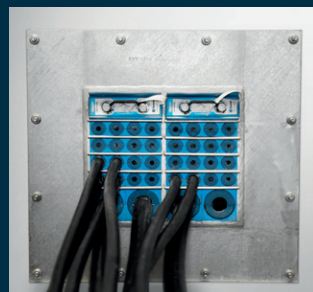
roxtec.com/transmission-hvdc

Walls & floors

Roxtec sealing solutions are ideal when multiple cables or pipes of different types need to penetrate any type of wall or floor and the structure must meet specific safety ratings. Keep your site dry and protect equipment from humidity and rodents.



MV and LV power cables



Control and instrumentation cables



HV power cables



Multi-core cables

Foundations

Roxtec cable and pipe seals work efficiently in underground walls and floors in buildings, technical shelters, and kiosks. Avoid water, humidity, and vermin issues in your foundations.



Standardize with our solutions

Roxtec sealing solutions provide certified protection in HVDC projects. There are potential disturbances and hazards so you need to ensure electromagnetic compatibility throughout your site. Standardize with our seals to secure bonding, grounding, and protection against electromagnetic threats and to make sure your building is not a source of EMI to the outside environment. The seals also protect against fire, water, gas, dust, dirt, and rodents. Design with Roxtec penetration seals throughout your site to ensure operational reliability.

Find your transit on roxtec.com

We are present worldwide as well as online to provide the best possible service and support. We recommend you to visit roxtec.com where you can find certified cable and pipe transit solutions for more than 100 applications and benefit from the easy search functions for both sealing solutions and certificates. You can also simplify your daily work by using the free online tool Roxtec Transit Designer™.

You are always welcome to contact us with any questions and requests.

